



**MINIMUM ORDER
3 PALLETS OF COMBINED
PRODUCT FROM STOCK**

CORELESS ROLLS - NOMINAL GAUGE

STOCK #	COLOR	GALLONS	DIMENSIONS	BAGS/CS	CS WT.	CS/PALLET
242310B	Black	7-10	24x23	500-20X25	18.4	72
243210B	Black	12-18	24x32	500-20X25	25.6	56
303610B	Black	20-30	30x36	250-10X25	18.0	80
333915B	Black	33	33x39	100-10X10	10.3	112
333920B	Black	33	33x39	100-10X10	13.7	88
404615B	Black	40-45	40x46	100-10X10	14.7	88
404620B	Black	40-45	40x46	100-10X10	19.6	72
434715B	Black	56	43x47	100-10X10	16.2	80
434720B	Black	56	43x47	100-10X10	21.6	64
385815B	Black	60	38x58	100-10X10	17.6	80
385820B	Black	60	38x58	100-10X10	23.5	56

FLAT PACK - NOMINAL GAUGE

STOCK #	COLOR	GALLONS	DIMENSIONS	BAGS/CS	CS WT.	CS/PALLET
FP6-2424XH	Black	7-10	24x24	500	17.3	80
FP6-2432XH	Black	12-18	24x32	500	23.0	64
FP6-3036XH	Black	20-30	30x36	250	16.2	80
FP6-333915B	Black	33	33x39	100	10.3	112
FP6-333920B	Black	33	33x39	100	13.7	88
FP6-404615B	Black	40-45	40x46	100	14.7	88
FP6-404620B	Black	40-45	40x46	100	19.6	64
FP6-434715B	Black	56	43x47	100	16.2	80
FP6-434720B	Black	56	43x47	100	21.6	64
FP6-385815B	Black	60	38x58	100	17.6	80
FP6-385820B	Black	60	38x58	100	23.5	56

STAR SEAL

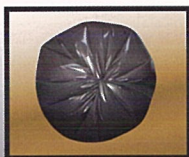


FLAT PACK - TRUE MIL

STOCK #	COLOR	GALLONS	DIMENSIONS	GAUGE	BAGS/CS	CS WT.	CS/PALLET
TM303615B	Black	20-30	30x36	1.5	100	10.8	88
TM333910B	Black	33	33x39	1.0	100	8.6	112
TM333915B	Black	33	33x39	1.5	100	12.9	112
TM333920B	Black	33	33X39	2.0	100	17.2	80
TM404610B	Black	40-45	40x46	1.0	100	12.3	88
TM404615B	Black	40-45	40x46	1.5	100	18.4	80
TM404620B	Black	40-45	40X46	2.0	100	24.5	56
TM434710B	Black	56	43x47	1.0	100	13.5	88
TM434715B	Black	56	43x47	1.5	100	20.2	64
TM434720B	Black	56	43X47	2.0	100	26.9	48
TM385810B	Black	60	38x58	1.0	100	14.7	80
TM385815B	Black	60	38x58	1.5	100	22.0	64
TM385820B	Black	60	38X58	2.0	100	29.4	50
TM465015B	Black	62	46x50	1.5	100	23.0	64

CORELESS ROLLS - TRUE MIL

STOCK #	COLOR	GALLONS	DIMENSIONS	GAUGE	BAGS/CS	CS WT.	CS/PALLET
TM333910BR	Black	33	33x39	1.0	100	8.6	112
TM333915BR	Black	33	33x39	1.5	100	12.9	112
TM333920BR	Black	33	33x39	2.0	100	17.2	80
TM404610BR	Black	40-45	40x46	1.0	100	12.3	88
TM404615BR	Black	40-45	40x46	1.5	100	18.4	80
TM404620BR	Black	40-45	40x46	2.0	100	24.5	56
TM434710BR	Black	56	43x47	1.0	100	13.5	88
TM434715BR	Black	56	43x47	1.5	100	20.2	64
TM434720BR	Black	56	43x47	2.0	100	26.9	48
TM385810BR	Black	60	38x58	1.0	100	14.7	80
TM385815BR	Black	60	38x58	1.5	100	22.0	64
TM385820BR	Black	60	38x58	2.0	100	29.4	50

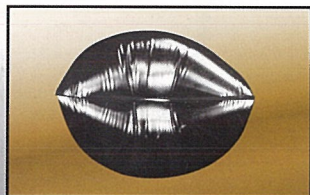


A Star Seal can liner is manufactured by folding the bottom of the can liner over twice and then sealing it. Star Seal can liners will virtually eliminate leaks, and conforms better to the shape of the waste receptacle by spreading refuse around the can liner.



FLAT PACK - TRUE MIL

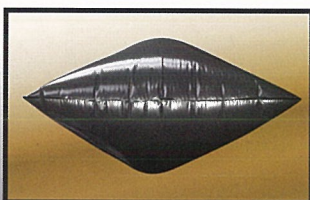
STOCK #	COLOR	GALLONS	DIMENSIONS	GAUGE	BAGS/CS	CS WT.	CS/PALLET
FS-02	Redwood	7-10	15x9x24	1.0	500	19.2	64
FS-03	Redwood	12-18	15x9x32	1.0	500	25.6	48
FS-05L	Redwood	20-30	16x14x37	1.25	250	23.1	56
FS-05H	Redwood	20-30	16x14x37	1.5	250	27.8	48
FS-06L	Redwood	33	20x13x40	1.25	100	11.0	112
FS-06H	Redwood	33	20x13x40	1.5	100	13.2	88
FS-08L	Redwood	55	22x14x60	1.5	100	21.6	64
FS-08H	Redwood	55	22x14x60	2.0	100	28.8	48
FS-07L	Redwood	40-45	23x17x48	1.25	100	16.0	80
FS-07H	Redwood	40-45	23x17x48	1.5	100	19.2	72
FS-12	Redwood	56	23x20x48	2.0	100	27.5	48
FS 09	Redwood	60	24x14x60	2.0	100	30.4	40



A Gusset Seal can liner is a flat style can liner that is manufactured with both sides tucked in to form gussets. The outer edges of the can liner where there are indentations is sealed with four layers of film, while the middle is sealed with only two layers. Can liners made with gussets work best in rectangle-shaped cans.

FLAT PACK - TRUE MIL

STOCK #	COLOR	GALLONS	DIMENSIONS	GAUGE	BAGS/CS	CS WT.	CS/PALLET
RF333913G	Gray	33	33x39	1.3	100	11.2	88
RF333917G	Gray	33	33x39	1.7	100	14.6	88
RF404613G	Gray	40-45	40x46	1.3	100	15.9	88
RF404617G	Gray	40-45	40x46	1.7	100	20.9	64
RF434713G	Gray	56	43x47	1.3	100	17.5	80
RF434717G	Gray	56	43x47	1.7	100	22.9	56
RF385813G	Gray	60	38x58	1.3	100	19.1	72
RF385817G	Gray	60	38x58	1.7	100	25.0	56



A Flat Seal can liner is manufactured by simply sealing the bottom edge. Can liners made with this type of seal are leak-proof and do not compromise the length of the can liner. Can liners made with a flat seal do not conform as well to the waste receptacle.

GUSSET SEAL

FLAT SEAL

REPUBLIC SERVICES, INC.