



## RESIN UTILITY TRASH CANS



BMTCU55 model shown



Multiple colors and sizes available

### KEY FEATURES SIDE HANDLES

- For easy lifting and transportation



### REINFORCED BASE

- To reduce wear and tear from dragging



### ADDITIONAL FEATURES

- Blow-molded HDPE for strength and rigidity
- Won't rust or chip and resistant to denting and bending
- Cold-impact construction stands up to cold environments
- Handles feature tie-downs and bag cinches to manage heavy loads

## OPTIONAL ACCESSORIES FOR RESIN UTILITY TRASH CANS



**20 GALLON LID**  
SIZE HANDLE TO HANDLE:  
21.09" W x 2.55" H  
WEIGHT: 1.59 lbs



**32 GALLON LID**  
SIZE HANDLE TO HANDLE:  
23.59" W x 2.65" H  
WEIGHT: 1.95 lbs



**44 GALLON LID**  
SIZE HANDLE TO HANDLE:  
25.74" W x 2.75" H  
WEIGHT: 2.87 lbs



**55 GALLON LID**  
SIZE HANDLE TO HANDLE:  
28.14" W x 2.85" H  
WEIGHT: 2.95 lbs



**STANDARD DOLLY**  
SIZE: 20.66" W x 6.75" H  
WEIGHT: 7.25 lbs  
CAPACITY: 250 lbs



**HEAVY DUTY DOLLY**  
SIZE: 20.66" W x 6.75" H  
WEIGHT: 7.25 lbs  
CAPACITY: 350 lbs

MODEL#	COLOR	MODEL#	COLOR
TCU20LID	GRAY	TCU20LIDR	RED
TCU20LIDBL	BLUE	TCU20LIDY	YELLOW
TCU20LIDG	DARK GREEN	TCU20LIDW	WHITE

TCU32LID	GRAY	TCU32LIDR	RED
TCU32LIDBL	BLUE	TCU32LIDY	YELLOW
TCU32LIDG	DARK GREEN	TCU32LIDW	WHITE

TCU44LID	GRAY	TCU44LIDR	RED
TCU44LIDBL	BLUE	TCU44LIDY	YELLOW
TCU44LIDG	DARK GREEN	TCU44LIDW	WHITE

TCU55LID	GRAY	TCU55LIDR	RED
TCU55LIDBL	BLUE	TCU55LIDY	YELLOW
TCU55LIDG	DARK GREEN	TCU55LIDW	WHITE

MODEL#	COLOR	CASTERS	COLOR
TCUDOLLYSD	BLACK	TPR	GRAY

MODEL#	COLOR	CASTERS	COLOR
TCUDOLLYHD	BLACK	POLYURETHANE	RED

### 20 GALLON RESIN UTILITY TRASH CAN

SIZE: 23.3" W x 19.4" L x 23.25" H  
WEIGHT: 6.13 lbs

MODEL#	COLOR
BMTCU20	GRAY
BMTCU20BL	BLUE
BMTCU20G	DARK GREEN
BMTCU20R	RED
BMTCU20Y	YELLOW
BMTCU20W	WHITE

### 32 GALLON RESIN UTILITY TRASH CAN

SIZE: 26.1" W x 21.9" L x 28.75" H  
WEIGHT: 9.55 lbs

MODEL#	COLOR
BMTCU32	GRAY
BMTCU32BL	BLUE
BMTCU32G	DARK GREEN
BMTCU32R	RED
BMTCU32Y	YELLOW
BMTCU32W	WHITE

### 44 GALLON RESIN UTILITY TRASH CAN

SIZE: 28.4" W x 24" L x 32" H  
WEIGHT: 13.56 lbs

MODEL#	COLOR
BMTCU44	GRAY
BMTCU44BL	BLUE
BMTCU44G	DARK GREEN
BMTCU44R	RED
BMTCU44Y	YELLOW
BMTCU44W	WHITE

### 55 GALLON RESIN UTILITY TRASH CAN

SIZE: 30.9" W x 26.4" L x 33.2" H  
WEIGHT: 16.5 lbs

MODEL#	COLOR
BMTCU55	GRAY
BMTCU55BL	BLUE
BMTCU55G	DARK GREEN
BMTCU55R	RED
BMTCU55Y	YELLOW
BMTCU55W	WHITE

Products are subject to change without notice; Dimensions, colors, and weight may vary from the actual product.

\*Optional accessories sold separately.

## RESIN WHEELED TRASH CANS



BMTCW65 model shown



Multiple colors and sizes available



### KEY FEATURES CLEAN ACCESS HANDLE ON LID

- Enhanced polymers in lid for lasting durability



### DRAIN PLUG

- For easy clean out



### NYLON BUSHINGS

- For a smoother ride

### ADDITIONAL FEATURES

- Won't rust or chip and resistant to denting and bending
- Blow-molded HDPE for strength and rigidity
- Cold-impact construction stands up to cold environments



### 32 GALLON RESIN WHEELED TRASH CAN

SIZE: 20.25" W x 26.5" L x 36.5" H  
WEIGHT: 15 lbs

MODEL#	COLOR
BMTCW32	GRAY
BMTCW32BL	BLUE
BMTCW32G	DARK GREEN
BMTCW32R	RED
BMTCW32Y	YELLOW



### 50 GALLON RESIN WHEELED TRASH CAN

SIZE: 23.32" W x 30" L x 38.46" H  
WEIGHT: 24 lbs

MODEL#	COLOR
BMTCW50	GRAY
BMTCW50BL	BLUE
BMTCW50G	DARK GREEN
BMTCW50R	RED
BMTCW50Y	YELLOW



### 65 GALLON RESIN WHEELED TRASH CAN

SIZE: 27" W x 31.26" L x 40.86" H  
WEIGHT: 29 lbs

MODEL#	COLOR
BMTCW65	GRAY
BMTCW65BL	BLUE
BMTCW65G	DARK GREEN
BMTCW65R	RED
BMTCW65Y	YELLOW



### 96 GALLON RESIN WHEELED TRASH CAN

SIZE: 30.28" W x 35" L x 43.54" H  
WEIGHT: 37 lbs

MODEL#	COLOR
BMTCW96	GRAY
BMTCW96BL	BLUE
BMTCW96G	DARK GREEN
BMTCW96R	RED
BMTCW96Y	YELLOW

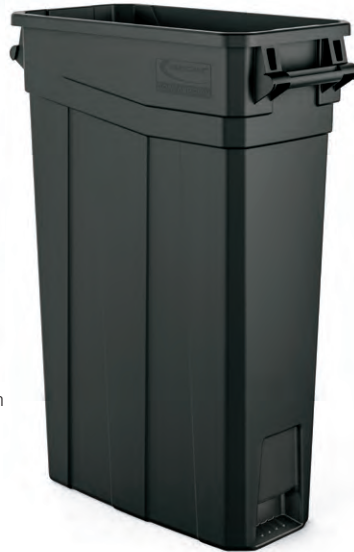
Products are subject to change without notice; Dimensions, colors, and weight may vary from the actual product.



## RESIN SLIM TRASH CANS WITH AND WITHOUT HANDLES



TCN2030 model shown



TCNH2030 model shown



### KEY FEATURES FOOT ASSIST

- Holds can down during liner removal



### EXTRA-LARGE AIR CHANNELS

- Allows for effortless liner removal

### ADDITIONAL FEATURES

- Heavy-duty polymer for strength and rigidity
- Won't rust or chip and is resistant to denting and bending
- Handles feature bag cinches for easy bag management without knot tying
- Multiple colors available

## OPTIONAL ACCESSORIES\*



### DOUBLE FLIP LID

SIZE:  
11.83" W x 20.548" L x 3.851" H  
WEIGHT: 3.18 lbs

MODEL#	COLOR
TCNLID01BK	BLACK
TCNLID01	GRAY
TCNLID01BL	BLUE
TCNLID01G	DARK GREEN
TCNLID01S	SAND



### BOTTLE AND CAN LID

SIZE:  
11.873" W x 20.248" L x 1.409" H  
WEIGHT: 1.04 lbs

MODEL#	COLOR
TCNLID02BK	BLACK
TCNLID02	GRAY
TCNLID02BL	BLUE
TCNLID02G	DARK GREEN
TCNLID02S	SAND



### PAPER RECYCLING LID

SIZE:  
11.873" W x 20.248" L x 1.356" H  
WEIGHT: 1.04 lbs

MODEL#	COLOR
TCNLID03BK	BLACK
TCNLID030	GRAY
TCNLID03BL	BLUE
TCNLID03G	DARK GREEN
TCNLID03S	SAND



### RESIN DOLLY

SIZE:  
11.882" W x 20.782" L x 6.177" H  
WEIGHT: 5.38 lbs

MODEL#	COLOR
TCNDOLLY	BLACK



### STAINLESS STEEL DOLLY

SIZE:  
10.375" W x 18.437" L x 8.687" H  
WEIGHT: 6.36 lbs

MODEL#
TCNDOLLYSS

\*Optional accessories sold separately. Products are subject to change without notice; Dimensions, colors, and weight may vary from the actual product.

## 23 GALLON RESIN SLIM TRASH CAN WITH HANDLES

SIZE: 11.086" W x 22.02" L x 30" H  
WEIGHT: 7 lbs



MODEL#	COLOR
TCNH2030BK	BLACK
TCNH2030	GRAY
TCNH2030BL	BLUE
TCNH2030G	DARK GREEN
TCNH2030S	SAND



## 23 GALLON RESIN SLIM TRASH CAN

SIZE: 11.086" W x 19.986" L x 30" H  
WEIGHT: 7 lbs



MODEL#	COLOR
TCN2030BK	BLACK
TCN2030	GRAY
TCN2030BL	BLUE
TCN2030G	DARK GREEN
TCN2030S	SAND



## INDOOR DECORATIVE METAL TRASH CANS



MTCIND3001 model shown



MTCIND3002 model shown

### KEY FEATURES TEXTURED POWDER-COATED LID

- Easy removal for service



### REMOVABLE LINER

- For easy cleanup



### TEXTURED POWDER-COATED BODY

- Maintains a professional appearance (stainless steel on MTCRES models)



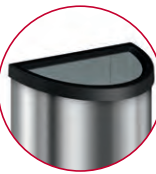
### ADDITIONAL FEATURES

- Heavy-duty construction to withstand everyday use
- Rigid plastic liner included (metal liner on MTCRES models)
- Multiple finish options available



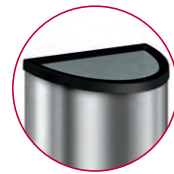
### 30 GALLON METAL INDOOR TRASH CAN

MODEL#	COLOR	SIZE	WEIGHT
MTCIND3001	BLACK PC	20.41" W x 34.37" H	43 lbs
MTCIND3002	ALUMINUM LID / BLACK PC BASE	20.41" W x 34.37" H	43 lbs
MTCIND3003	BLACK PC LID / SILVER BASE	20.41" W x 34.37" H	43 lbs



### 8 GALLON METAL CRESENT INDOOR TRASH CAN

MODEL#	COLOR	SIZE	WEIGHT
MTCRES801	STAINLESS STEEL LID / STAINLESS STEEL BASE	13.2" W x 6.7" L x 27.53" H	13.8 lbs
MTCRES802	BLACK PC LID / STAINLESS STEEL BASE	13.46" W x 6.96" L x 27.53" H	13.2 lbs



### 12 GALLON METAL CRESENT INDOOR TRASH CAN

MODEL#	COLOR	SIZE	WEIGHT
MTCRES1201	STAINLESS STEEL LID / STAINLESS STEEL BASE	16.45" W x 8.45" L x 32.71" H	20.2 lbs
MTCRES1202	BLACK PC LID / STAINLESS STEEL BASE	16.45" W x 8.45" L x 32.71" H	19.5 lbs

Products are subject to change without notice; Dimensions, colors, and weight may vary from the actual product.

## ENCLOSED TRASH CAN



SIZE: 21" W x 23.25" D x 43.75" H  
WEIGHT: 55.4 lbs  
CAPACITY: 44 gal

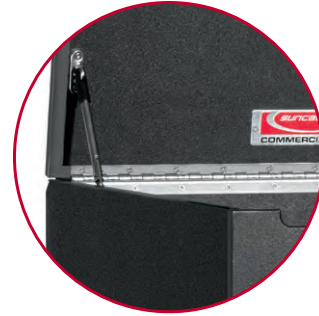
MODEL#	COLOR
TBE44BLK	BLACK 

Products are subject to change without notice; Dimensions, colors, and weight may vary from the actual product.

### KEY FEATURES

#### DURABLE

- Hinged lid with locking struts
- Made of durable resin composite material, with metal reinforcements



#### ACCESSIBLE

- Easy access front door for waste removal



#### RIGID LINER

- Includes a 44 gallon removable roto-molded rigid liner



#### ADDITIONAL FEATURES

- Metal closure keeps door in place
- No assembly required



## OUTDOOR DECORATIVE METAL TRASH CANS



MTCRND3501 model shown



### KEY FEATURES METAL FRAME

- Thermoplastic-coated
- Resists fading, cracking, peeling, or discoloring
- Excellent corrosion resistance
- High abrasion and impact resistance

### RIGID PLASTIC LINER

- Removable liner for easy clean up

### HDPE LIDS

- Stylish resin lid with UV inhibitors to help maintain the color over the life of the product
- Alternative spun metal lid with ash bonnet to match the can

### ADDITIONAL FEATURES

- Steel wire lanyard for lid connection
- Adjustable-leveling foot pads
- Multiple colors and styles available



### 35 GALLON METAL TRASH CAN ROTO MOLDED LID

SIZE: 24.88" W x 42.44" H  
WEIGHT: 118 lbs

MODEL#	COLOR	
MTCRND3501	BLACK	●
MTCRND3501B	BLUE	●
MTCRND3501G	DARK GREEN	●

### 35 GALLON METAL TRASH CAN METAL LID

SIZE: 23.97" W x 39.19" H  
WEIGHT: 120 lbs

MODEL#	COLOR	
MTCRND3502	BLACK	●
MTCRND3502B	BLUE	●
MTCRND3502G	DARK GREEN	●

### 30 GALLON METAL SQUARE TRASH CAN 2-WAY LID

SIZE: 24.41" W x 24.4" L x 47.76" H  
WEIGHT: 99 lbs

MODEL#	COLOR	
MTCSQ300	BLACK	●

For additional colors, call 800.444.3310

### 30 GALLON METAL SQUARE TRASH CAN CHUTE LID

SIZE: 22.91" W x 33.96" L x 52.41" H  
WEIGHT: 99 lbs

MODEL#	COLOR	
MTCSQ305	BLACK	●

For additional colors, call 800.444.3310

Products are subject to change without notice; Dimensions, colors, and weight may vary from the actual product.

## OUTDOOR RESIN TRASH CANS WITH SIGN RETAINING FRAMES COVERED LID CAN



RMCC3501 model shown



### KEY FEATURES CUSTOMIZABLE

- Slide-in railing system for sign advertisements on 3 sides
- Bottom retainer clip holds sign in place



### EASY CLEAN UP

- Flip open lid for quick access
- Removable rigid liner included
- Smooth surface is easy to clean



### ADDITIONAL FEATURES

- Piano hinge on lid for lasting strength
- Durable roto-molded frame
- One piece base for strength and longevity
- Base allows for concrete anchors to be used to secure the can to the ground
- Drain holes to release water
- Won't rust or chip and is resistant to denting and bending

## OPEN LID CAN





RMCC3502 model shown



### 35 GALLON RESIN CUSTOMIZABLE GARBAGE CAN WITH COVERED LID



SIZE: 28.5" W x 28.5" L x 41.7" H  
WEIGHT: 53 lbs

MODEL#	COLOR
RMCC3501	JAVA 
RMCC3501B	BLACK 



### 35 GALLON RESIN CUSTOMIZABLE GARBAGE CAN WITH OPEN LID

SIZE: 28.4" W x 28.4" L x 33.9" H  
WEIGHT: 44 lbs

MODEL#	COLOR
RMCC3502	JAVA 
RMCC3502B	BLACK 



Products are subject to change without notice; Dimensions, colors, and weight may vary from the actual product.



## OUTDOOR RESIN TRASH CANS COVERED LID CAN



RMCC3501NR model shown



### KEY FEATURES DURABLE

- Piano hinge on lid for lasting strength



### EASY CLEAN UP

- Flip open lid for quick access
- Removable rigid liner included
- Smooth surface is easy to clean



### ADDITIONAL FEATURES

- Durable roto-molded frame
- One piece base for strength and longevity
- Base allows for concrete anchors to be used to secure the can to the ground
- Drain holes to release water
- Won't rust or chip and is resistant to denting and bending

## OPEN LID CAN






RMCC3502NR model shown



## 35 GALLON RESIN GARBAGE CAN WITH COVERED LID



SIZE: 28.5" W x 28.5" L x 41.7" H  
WEIGHT: 53 lbs

MODEL#	COLOR
RMCC3501NR	JAVA 
RMCC3501NRBL	BLUE 
RMCC3501NRB	BLACK 



## 35 GALLON RESIN GARBAGE CAN WITH OPEN LID

SIZE: 28.4" W x 28.4" L x 33.9" H  
WEIGHT: 44 lbs

MODEL#	COLOR
RMCC3502NR	JAVA 
RMCC3502NRBL	BLUE 
RMCC3502NRB	BLACK 



Products are subject to change without notice; Dimensions, colors, and weight may vary from the actual product.

## METAL PLATFORM TRUCKS STANDARD AND HEAVY DUTY



MDPTSD2448 model shown



### WHEEL OPTIONS STANDARD DUTY

- 8" Smooth-rolling polyurethane casters
- Polypropylene core
- Capacity up to 1,000 lbs.

### HEAVY DUTY

- 8" Smooth-rolling polyurethane casters
- Cast iron core
- Capacity up to 2,000 lbs

### KEY FEATURES 13-GAUGE STEEL PLATFORM CONSTRUCTION

- Heavy-duty performance (material cutaway shown)

### INTEGRATED BRAKE

- Holds platform in place for loading and unloading

### STOWABLE HANDLE

- Conveniently tucks away under platform when not in use

## 360° ADJUSTABLE CASTER SYSTEM



Innovative caster system allows for a fixed front caster mode, which keeps the platform truck straight when desired, or full-range 360° movement, perfect for tight spaces, sharp corners, turn-arounds, and side-to-side handling.

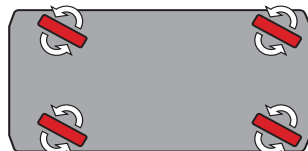
### FIXED

Slide lever to the left for traditional fixed positioning.



### FULL-RANGE

Slide lever to the right for full-range 360° maneuvering



### ADDITIONAL FEATURES

- Non-marring polyurethane casters resist flat spots under load
- Powder-coated steel on both the handle and frame

MODEL#	CASTER CORE	CAPACITY	DURABILITY
<b>SIZE: 24" W x 36" L x 40" H WEIGHT: 94 lbs SD</b>			
MDPTSD2436	POLYPROPYLENE	1000 LBS	STAND. DUTY
<b>SIZE: 24" W x 48" L x 40" H WEIGHT: 107 lbs SD / 118 lbs HD</b>			
MDPTSD2448	POLYPROPYLENE	1000 LBS	STAND. DUTY
MDPTH2448	CAST IRON	2000 LBS	HEAVY DUTY
<b>SIZE: 30" W x 60" L x 40" H WEIGHT: 135 lbs SD / 146 lbs HD</b>			
MDPTSD3060	POLYPROPYLENE	1000 LBS	STAND. DUTY
MDPTH3060	CAST IRON	2000 LBS	HEAVY DUTY

Products are subject to change without notice; Dimensions, colors, and weight may vary from the actual product.

## RESIN PLATFORM TRUCKS STANDARD OR HEAVY DUTY



PDPTSD2448 model shown



### 360° ADJUSTABLE CASTER SYSTEM



Innovative caster system allows for a fixed front caster mode, which keeps the platform truck straight when desired, or full-range 360° movement, perfect for tight spaces, sharp corners, turn-arounds, and side-to-side handling.

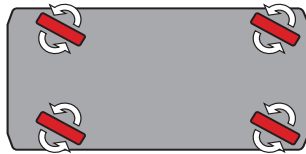
#### FIXED

Slide lever to the left for traditional fixed positioning



#### FULL-RANGE

Slide lever to the right for full-range 360° maneuvering



Products are subject to change without notice; Dimensions, colors, and weight may vary from the actual product.

### WHEEL OPTIONS STANDARD DUTY

- 8" Smooth-rolling, non-marring polyurethane casters
- Polypropylene core
- Capacity up to 1,000 lbs



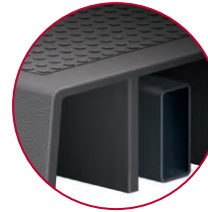
### HEAVY DUTY

- 8" Smooth-rolling, non-marring polyurethane casters
- Cast iron core
- Capacity up to 2,000 lbs



### KEY FEATURES STRUCTURAL FOAM

- With steel frame construction (material cutaway shown)



### INTEGRATED BRAKE

- Holds platform in place for loading and unloading



### STOWABLE HANDLE

- Conveniently tucks away under platform when not in use



### ADDITIONAL FEATURES

- Powder-coated steel on both the handle and the frame
- Platform won't rust or chip; resistant to denting and bending

MODEL#	CASTER CORE	CAPACITY	DURABILITY
<b>SIZE: 24" W x 36" L x 40" H WEIGHT: 68 lbs SD / 90 lbs HD</b>			
PDPTSD2436	POLYPROPYLENE	1000 LBS	STAND. DUTY
PDPTH2436	CAST IRON	2000 LBS	HEAVY DUTY
<b>SIZE: 24" W x 48" L x 40" H WEIGHT: 73 lbs SD / 95 lbs HD</b>			
PDPTSD2448	POLYPROPYLENE	1000 LBS	STAND. DUTY
PDPTH2448	CAST IRON	2000 LBS	HEAVY DUTY
<b>SIZE: 30" W x 60" L x 40" H WEIGHT: 96 lbs SD / 120 lbs HD</b>			
PDPTSD3060	POLYPROPYLENE	1000 LBS	STAND. DUTY
PDPTH3060	CAST IRON	2000 LBS	HEAVY DUTY



## STANCHION CART



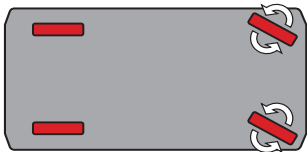
### 360° ADJUSTABLE CASTER SYSTEM



Innovative caster system allows for a fixed front caster mode, which keeps the stanchion cart straight when desired, or full-range 360° movement, perfect for tight spaces, sharp corners, turn-arounds, and side-to-side handling.

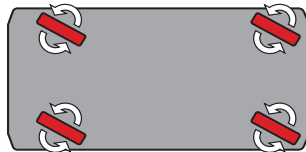
#### FIXED

Slide lever to the left for traditional fixed positioning.



#### FULL-RANGE

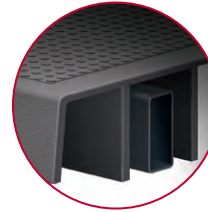
Slide lever to the right for full-range 360° maneuvering



Products are subject to change without notice; Dimensions, colors, and weight may vary from the actual product.

### KEY FEATURES STRUCTURAL FOAM

- With steel frame construction (material cutaway shown)
- Won't rust or chip and is resistant to denting and bending



### INTEGRATED BRAKES

- Holds cart in place for easy loading and unloading
- Conveniently located for easy application



### TIE-DOWNS

- Secure large items with integrated tie-downs
- Four tie-downs, two on each side



### SPRING LOADED STANCHIONS

- Spring loaded stanchion retainers eliminate accidental removal
- Six bar sockets and removable stanchions for optimal material handling



### DURABLE WHEELS

- Durable polyurethane-coated wheels for a smooth, non-marring quiet ride
- Polypropylene core
- Capacity up to 1,000 lbs.
- Caster housing is over-engineered for lateral strength



MODEL#	DIMENSIONS	CASTER	CAPACITY
PDST2436	24.26" W x 39.5" L x 43.5" H	POLYPROPYLENE CORE	1000 LBS
PDST2448	24.24" W x 51.5" L x 43.5" H	POLYPROPYLENE CORE	1000 LBS
PDST3060	30.27" W x 63.5" L x 43.5" H	POLYPROPYLENE CORE	1000 LBS

## TILT TRUCKS LIGHT, STANDARD AND HEAVY DUTY



RMTTHD100 model shown



### 1/2 CUBIC YARD TILT TRUCK

SIZE: 27.6" W x 59.2" L x 34.86" H  
WEIGHT: 65 lbs LD / 100 lbs SD / 100 lbs HD

DURABILITY	MODEL#	WHEEL DIAMETER	CAPACITY
LIGHT DUTY	RMTTLD50	10"	650 LBS
STANDARD DUTY	RMTTSD50	10"	900 LBS
HEAVY DUTY	RMTTHD50	10"	1400 LBS



RMTTSD50

### 3/4 CUBIC YARD TILT TRUCK

SIZE: 31" W x 69.3" L x 42.5" H / LD  
SIZE: 30.7" W x 68.8" L x 43" H / SD  
WEIGHT: 85 lbs LD / 110 lbs SD / 156 lbs HD

DURABILITY	MODEL#	WHEEL DIAMETER	CAPACITY
LIGHT DUTY	RMTTLD75	10"	750 LBS
STANDARD DUTY	RMTTSD75	12"	1,400 LBS

### 1 CUBIC YARD TILT TRUCK

SIZE: 33.87" W x 70" L x 43.84" H / LD & SD  
SIZE: 33.87" W x 70" L x 45.16" H / HD  
WEIGHT: 105 lbs LD / 140 lbs SD / 156 lbs HD

DURABILITY	MODEL#	WHEEL DIAMETER	CAPACITY
LIGHT DUTY	RMTTLD100	10"	750 LBS
STANDARD DUTY	RMTTSD100	12"	1,400 LBS
HEAVY DUTY	RMTTHD100	14"	2,300 LBS

### 1-1/2 CUBIC YARD TILT TRUCK

SIZE: 41.28" W x 85.87" L x 47.89" H / SD  
SIZE: 41.28" W x 85.87" L x 49" H / HD  
WEIGHT: 197 lbs SD / 205 lbs HD

DURABILITY	MODEL#	WHEEL DIAMETER	CAPACITY
STANDARD DUTY	RMTTSD150	12"	1,400 LBS
HEAVY DUTY	RMTTHD150	14"	2,300 LBS

### 2 CUBIC YARD TILT TRUCK

SIZE: 47.4" W x 85.5" L x 50.5" H / SD  
SIZE: 47.4" W x 85.5" L x 51" H / HD  
WEIGHT: 245 lbs SD / 255 lbs HD

DURABILITY	MODEL#	WHEEL DIAMETER	CAPACITY
STANDARD DUTY	RMTTSD200	12"	1,400 LBS
HEAVY DUTY	RMTTHD200	14"	2,300 LBS

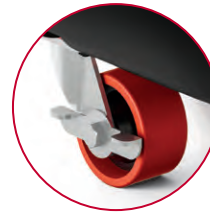
### KEY FEATURES ROTO-MOLDED MDPE

- Provides the ultimate durability (material cutaway shown)
- Won't rust or chip and resistant to denting and bending



### INDUSTRIAL STRENGTH CASTERS

- Available in 10, 12 and 14 inch
- Integrated brakes



### TOWABLE DESIGN

- Allows for connection of multiple units



### FORKLIFTABLE FEATURE

- Standard on all Standard Duty and Heavy Duty models



## OPTIONAL ACCESSORIES\*



### 1/2 CUBIC YARD LID

SIZE: 30.79" W x 57" L x 5.5" H  
WEIGHT: 10.6 lbs

MODEL#	RMTT50LID
--------	-----------

### 1 CUBIC YARD LID

SIZE: 35.5" W x 68.5" L x 7" H  
WEIGHT: 17.5 lbs

MODEL#	RMTT100LID
--------	------------

### 3/4 CUBIC YARD LID

SIZE: 31.69" W x 67" L x 6.9" H  
WEIGHT: 14 lbs

MODEL#	RMTT75LID
--------	-----------

### 1-1/2 CUBIC YARD LID

SIZE: 44.6" W x 86" L x 6.8" H  
WEIGHT: 45 lbs

MODEL#	RMTT150LID
--------	------------



### TILT TRUCK TOW RACK FOR STANDARD AND HEAVY DUTY MODELS

SIZE: 10.75" W x 55" L x 3.25" H

MODEL#	TTTOWRACK
--------	-----------

Products are subject to change without notice; Dimensions, colors, and weight may vary from the actual product.

\*Optional accessories sold separately.

## HEAVY DUTY UTILITY CART



PUCSD1937 Model shown

**SIZE: 19.5" W x 41.78" L x 34.81" H**  
**WEIGHT: 46.87 lbs**

MODEL#	CASTER	MAXIMUM CAPACITY
PUCSD1937	TPR 5" RIM	500 lbs*



**SIZE: 26.5" W x 48.78" L x 34.81" H**  
**WEIGHT: 57.47 lbs**

MODEL#	CASTER	MAXIMUM CAPACITY
PUCSD2645	TPR 5" RIM	500 lbs*

\*CAPACITY: 250 lbs per shelf. Products are subject to change without notice; Dimensions, colors, and weight may vary from the actual product.

### KEY FEATURES UTILITY SIDE RAIL

- Rail on outer edge of top platform provides more storage solutions
- Bins fit securely in rail for more versatile storage options



### DURABLE WHEELS

- Durable TPR-coated wheels for a smooth, non-marring quiet ride
- Polypropylene core
- Up to 85% stronger than our leading competitor



### CORD HOOK

- Keep cords and ropes organized for quick access



### OPTIONAL ACCESSORIES\* CUSTOMIZABLE BIN SYSTEM

- Optimize storage strategies with 6 movable bins
- Bins sit securely in grooves or the upper utility rail of the cart



\*Optional accessories sold separately.



PUCSD2645 Model shown



## HEAVY DUTY PLUS UTILITY CART



**SIZE: 19.5" W x 41.78" L x 34.81" H**  
**WEIGHT: 53.5 lbs**

MODEL#	CASTER	MAXIMUM CAPACITY
PUCHD1937	POLYURETHANE 5" RIM	500 lbs*

**SIZE: 26.5" W x 48.78" L x 34.81" H**  
**WEIGHT: 62.95 lbs**

MODEL#	CASTER	MAXIMUM CAPACITY
PUCHD2645	POLYURETHANE 5" RIM	500 lbs*

**SIZE: 26.5" W x 58.78" L x 34.81" H**  
**WEIGHT: 68.83 lbs**

MODEL#	CASTER	MAXIMUM CAPACITY
PUCHD2654	POLYURETHANE 5" RIM	750 lbs*

\*CAPACITY: 250 lbs per shelf. 375 lbs per shelf for model PUCHD2654. Products are subject to change without notice; Dimensions, colors, and weight may vary from the actual product.

### 360° ADJUSTABLE CASTER SYSTEM



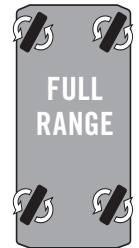
Innovative caster system allows for a fixed front caster mode, which keeps the utility cart straight when desired, or full-range 360° movement.

#### FIXED

Slide lever to the left for traditional fixed positioning.

#### FULL-RANGE

Slide lever to the right for full-range 360° maneuvering.



### KEY FEATURES CUSTOMIZABLE BIN SYSTEM

- Optimize storage strategies with 6 movable bins
- Bins sit securely in grooves or the upper utility rail of the cart



### UTILITY SIDE RAIL

- Rail on outer edge of top platform provides more storage solutions
- Bins fit securely in rail for more versatile storage options



### DURABLE WHEELS

- Durable polyurethane-coated wheels for a smooth, non-marring quiet ride
- Polypropylene core
- Up to 85% stronger than our leading competitor



## SERVICE CART



RC2040 model shown

### KEY FEATURES HEAVY DUTY

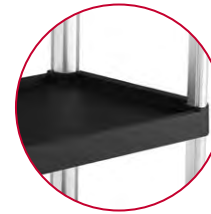
- 300 lbs capacity (RC2030 and RC2040 100 lbs per shelf. RC4S2040 75 lbs per shelf)

### FLOOR AND WALL PROTECTION

- 4 non-marring casters protect floors
- Rounded corners on each side help protect walls

### ERGONOMIC HANDLE

- Dual ergonomic rounded push handles



### ADDITIONAL FEATURES

- Smooth shelf surface is easy to clean
- Perfect for schools, hotels, and restaurants



SIZE: 20" W x 34" L x 37.92" H

MODEL#	CASTER	MAXIMUM CAPACITY
RC2030	TPR	300 lbs*



SIZE: 20" W x 39.85" L x 38.17" H

MODEL#	CASTER	MAXIMUM CAPACITY
RC2040	TPR	300 lbs*



SIZE: 20" W x 39.85" L x 51.80" H

MODEL#	CASTER	MAXIMUM CAPACITY
RC4S2040	TPR	300 lbs*

\*CAPACITY: RC2030 and RC2040 100 lbs per shelf. RC4S2040 75 lbs per shelf. Products are subject to change without notice; Dimensions, colors, and weight may vary from the actual product.



## STANDARD HOUSEKEEPING CART

**HKC1000** DIMENSIONS 62.13" L x 24" W x 49.75" H WEIGHT 102 LBS



1 standard non-marring roller at each corner



### KEY FEATURES IMPACT-ABSORBING BUMPERS

- Bumpers designed to reduce costly wall damage



### LONG-HANDLE TOOL STORAGE

- Long-handle tool storage on all four sides
- Holder also doubles as hanging rack for spray bottles



### STANDARD BAG INCLUDED

- Spacious interior for collecting laundry or refuse
- Secure side zipper allows easy removal of contents
- One HKCBAG05 included with each cart





## STANDARD PLUS HOUSEKEEPING CART HKC1500

**DIMENSIONS** 62.13" L x 24" W x 49.38" H **WEIGHT** 100 LBS



3 standard independent  
non-marring rollers at each corner



### KEY FEATURES IMPACT-ABSORBING BUMPERS

- Spring-loaded to reduce costly wall damage
- Low bottom roller hits base board



### LONG-HANDLE TOOL STORAGE

- Long-handle tool storage on all four sides
- Holder also doubles as hanging rack for spray bottles



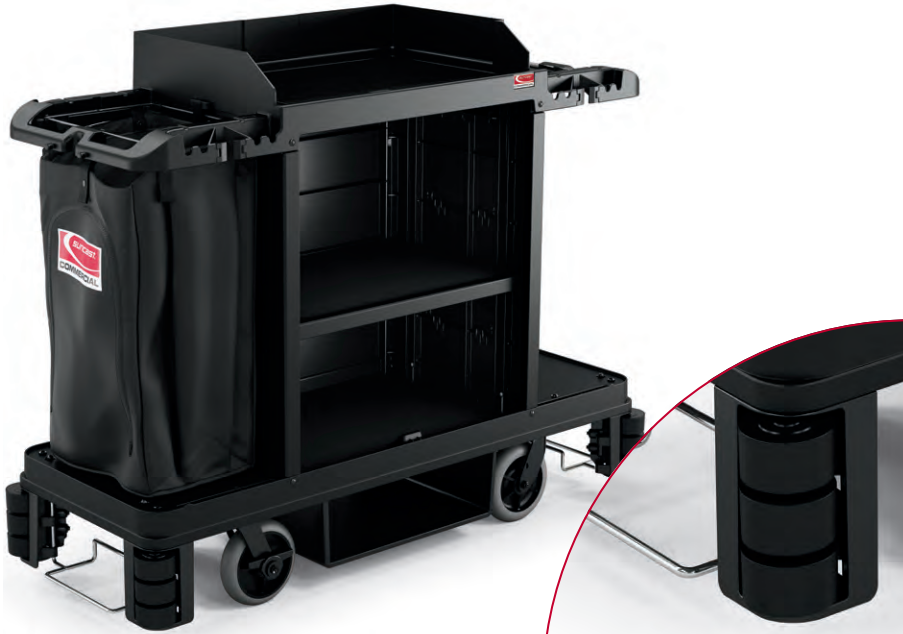
### STANDARD BAG INCLUDED

- Spacious interior for collecting laundry or refuse
- Secure side zipper allows easy removal of contents



## PREMIUM HOUSEKEEPING CART HKC2000

**DIMENSIONS** 62.13" L x 24" W x 49.75" H **WEIGHT** 109 LBS



3 standard independent non-marring rollers at each corner

### KEY FEATURES IMPACT-ABSORBING BUMPERS

- Spring-loaded to reduce costly wall damage
- Low bottom roller hits base board

### LONG-HANDLE TOOL STORAGE

- Long-handle tool storage on all four sides
- Holder also doubles as hanging rack for spray bottles

### STANDARD BAG INCLUDED

- Spacious interior for collecting laundry or refuse
- Secure side zipper allows easy removal of contents
- One HKCBAG05 included with each cart



## 360° ADJUSTABLE CASTER SYSTEM



Innovative caster system allows for a fixed front caster mode, which keeps the housekeeping cart straight when desired, or full-range 360° movement, perfect for tight spaces, sharp corners, turn-arounds, and side-to-side handling.



Slide lever to the left for traditional fixed positioning



Slide lever to the right for full-range 360° maneuvering





## OPTIONAL ACCESSORIES\*



### LOCKABLE HOOD HKCHOOD

- Lockable to protect supplies
- Ridges on top for added strength (holds up to 10 lbs evenly distributed)



### LOCKABLE DOORS HKCBMD00R

- Durable resin doors and handles
- Lockable to protect supplies



### LOCKABLE SLIDE DRAWER HKCDRW01

- Equipped with ball-bearing glides for smooth open and close operation



### ADJUSTABLE SHELF HKCSHELF

- Easily locks into place
- Can be attached in 3 different positions



### CARRY CADDY HKCCADDY6

- Increased depth to accommodate spray bottles
- Caddy can nest on both sides of the cart



### TOILET BRUSH CADDY HKCTBKIT

- Includes one caddy, one toilet brush and one toilet brush holder
- Discreetly stores toilet bowl brush when not in use
- Increased depth to accommodate spray bottles
- Helps keep contaminants separated from non-contaminated objects

## ADDITIONAL BAG OPTIONS\*



### AMENITY BAG HKCBAG01

- Spacious exterior pocket attached to main bag
- Perfect for collecting and organizing unused amenities



### DIVIDED BAG HKCBAG02

- Middle liner separating bag into two compartments
- Useful for organizing different contents for more convenient clean up



### 3-SIDED HANGING BAG WITH SHELVES HKCBAG03

- Equipped with 3 spacious shelves for more versatile storage solutions
- Exterior pockets perfect for conveniently storing smaller objects



### 8-POCKET ORGANIZER HKCBAG04

- 8 exterior pockets for smaller tools and accessories



### STANDARD BAG HKCBAG05

- Spacious interior for collecting laundry or refuse
- Secure side zipper allows easy removal of contents

\*Optional accessories and additional bag options sold separately. Products are subject to change without notice; Dimensions, colors, and weight may vary from the actual product.



## JOB BOXES



BMJBPCD4824 model shown

### KEY FEATURES GAS STRUTS

- Provide one handle easy lift and open lid support

### LOCKABLE

- Two nickel-plated steel draw latches (locks not included)

### WEATHER RESISTANT

- Automotive-grade weather seal

### DURABLE RESIN


- Won't bend, rust, scratch, or dent (material cutaway shown)

### HEAVY-DUTY STEEL HANDLES

- For easy two-person lift

### 48" JOB BOX

SIZE: 48" W x 25" D x 24" H  
CAPACITY: 100 gal  
WEIGHT: 56.17 lbs

MODEL#	COLOR
BMJBPCD4824	BLACK 

### 48" JOB BOX WITH FORKLIFT SYSTEM

SIZE: 48" W x 25.75" D x 32.77" H  
CAPACITY: 100 gal  
WEIGHT: 85 lbs

MODEL#	COLOR
BMJB4824FL	BLACK 

### 48" JOB BOX WITH FORKLIFT AND CASTER SYSTEM

SIZE: 48" W x 25.75" D x 37" H  
CAPACITY: 100 gal  
WEIGHT: 107 lbs

MODEL#	COLOR
BMJB4824FLC	BLACK 

### ADDITIONAL FEATURES

- Full size for 100 gallon equivalent storage
- Half the weight of metal—easier to move
- Fits between wheel wells in the bed of a full-size truck
- Fully secured with metal reinforcements

Products are subject to change without notice; Dimensions, colors, and weight may vary from the actual product.

## RESIN STORAGE CABINETS WALL, BASE, TALL AND MEGA-TALL



BMCCPD8004 model shown



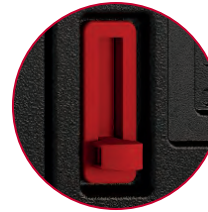
### KEY FEATURES METAL-REINFORCED SHELVING

- Safely stores up to 200 lbs (50 lbs for Wall Storage Cabinet)



### MULTI-WALL RESIN PANELS

- Resist dents, scratches, and rust
- Engineered for added strength and stability



### UPPER AND LOWER LATCHES

- Provide additional unit security (lower latch only on Base, Tall and Mega-Tall Storage Cabinets; not included on Wall Storage Cabinet)

### ADDITIONAL FEATURES

- Padlock-ready doors (padlock not included)



### WALL STORAGE CABINET

SIZE: 30" W x 12" D x 30.25" H  
WEIGHT: 31 LBS  
CAPACITY: 4 CU FT  
SHELF WEIGHT: 50 LBS

MODEL#	COLOR
BMCCPD3000	GRAY 



### BASE STORAGE CABINET

SIZE: 30" W x 20.25" D x 36" H  
WEIGHT: 42.66 LBS  
CAPACITY: 9 CU FT  
SHELF WEIGHT: 200 LBS

MODEL#	COLOR
BMCCPD3600	GRAY 



### TALL STORAGE CABINET 4-SHELF

SIZE: 30" W x 20.25" D x 72" H  
WEIGHT: 77.8 LBS  
CAPACITY: 19 CU FT  
SHELF WEIGHT: 200 LBS

MODEL#	COLOR
BMCCPD7204	GRAY 

### TALL STORAGE CABINET 6-SHELF

SIZE: 30" W x 20.25" D x 72" H  
WEIGHT: 85.8 LBS  
CAPACITY: 19 CU FT  
SHELF WEIGHT: 200 LBS

MODEL#	COLOR
BMCCPD7206	GRAY 



### MEGA-TALL STORAGE CABINET 4-SHELF

SIZE: 40" W x 20.25" D x 80.25" H  
WEIGHT: 105.2 LBS  
CAPACITY: 31 CU FT  
SHELF WEIGHT: 200 LBS

MODEL#	COLOR
BMCCPD8004	GRAY 

### MEGA-TALL STORAGE CABINET 6-SHELF

SIZE: 40" W x 20.25" D x 80.25" H  
WEIGHT: 119.5 LBS  
CAPACITY: 31 CU FT  
SHELF WEIGHT: 200 LBS

MODEL#	COLOR
BMCCPD8006	GRAY 

Products are subject to change without notice; Dimensions, colors, and weight may vary from the actual product.



## RESIN LUMBER BENCHES



### KEY FEATURES INNOVATIVE DESIGN

- Maintenance-free: will not rot, corrode, decay or splinter
- UV inhibitors prevent color fading and never needs to be sealed, stained, or painted
- Resistant to moisture and scratching in any weather condition



### DURABILITY

- Heavily braced to prevent sagging
- Powder-coated structural metal frames are rust resistant (not included on resin frame benches)

### ADDITIONAL FEATURES

- Easy to assemble
- Maximum comfort seating



PLAB6C shown

### DESIGNER BENCH WITH RESIN FRAME

#### 4' RESIN BENCH

SIZE: 48" L x 25" W x 33" H  
WEIGHT: 109 lbs

MODEL#	COLOR
PLAB4C	CEDAR
PLAB4G	GREEN

#### 6' RESIN BENCH

SIZE: 72" L x 25" W x 33" H  
WEIGHT: 155 lbs

MODEL#	COLOR
PLAB6C	CEDAR
PLAB6G	GREEN
PLAB6R	WEATHERED REDWOOD



PLCPB6C shown

### TRAILSIDE BENCH WITH RESIN FRAME

#### 4' RESIN BENCH

SIZE: 48" L x 25" W x 32" H  
WEIGHT: 85 lbs

MODEL#	COLOR
PLCPB4C	CEDAR
PLCPB4GY	GRAY
PLCPB4G	GREEN

#### 6' RESIN BENCH

SIZE: 72" L x 25" W x 32" H  
WEIGHT: 128 lbs

MODEL#	COLOR
PLCPB6C	CEDAR
PLCPB6GY	GRAY
PLCPB6G	GREEN

#### 8' RESIN BENCH

SIZE: 96" L x 25" W x 32" H  
WEIGHT: 170 lbs

MODEL#	COLOR
PLCPB8C	CEDAR
PLCPB8GY	GRAY
PLCPB8G	GREEN



PLCBG6C shown

### SPORT BENCH WITH RESIN FRAME

#### 4' RESIN BENCH

SIZE: 48" L x 19.5" W x 20" H  
WEIGHT: 65 lbs

MODEL#	COLOR
PLSB4C	CEDAR

#### 6' RESIN BENCH

SIZE: 72" L x 19.5" W x 20" H  
WEIGHT: 89 lbs

MODEL#	COLOR
PLSB6GY	GRAY
PLSB6G	GREEN

#### 8' RESIN BENCH

SIZE: 96" L x 19.5" W x 20" H  
WEIGHT: 121 lbs

MODEL#	COLOR
PLSB8C	CEDAR
PLSB8GY	GRAY

\*Products are subject to change without notice; Dimensions, colors, and weight may vary from the actual product.





PLCBS6C shown

## URBAN SURFACE MOUNT BENCH WITH METAL FRAME

### 4' RESIN BENCH

SIZE: 48" L x 22.5" W x 31.2" H  
WEIGHT: 110 lbs

MODEL#	COLOR
PLCBS4C	CEDAR
PLCBS4GY	GRAY
PLCBS4G	GREEN
PLCBS4W	WHITE
PLCBS4B	BLACK

### 6' RESIN BENCH

SIZE: 72" L x 22.5" W x 31.2" H  
WEIGHT: 160 lbs

MODEL#	COLOR
PLCBS6C	CEDAR
PLCBS6GY	GRAY
PLCBS6G	GREEN
PLCBS6W	WHITE
PLCBS6B	BLACK

### 8' RESIN BENCH

SIZE: 96" L x 22.5" W x 31.2" H  
WEIGHT: 210 lbs

MODEL#	COLOR
PLCBS8C	CEDAR
PLCBS8GY	GRAY
PLCBS8G	GREEN
PLCBS8W	WHITE



PLCBG6C shown

## URBAN IN GROUND BENCH WITH METAL FRAME

### 4' RESIN BENCH

SIZE: 48" L x 22.5" W x 31.2" H  
WEIGHT: 110 lbs

MODEL#	COLOR
PLCBG4C	CEDAR
PLCBG4GY	GRAY
PLCBG4G	GREEN
PLCBG4W	WHITE

### 6' RESIN BENCH

SIZE: 72" L x 22.5" W x 31.2" H  
WEIGHT: 160 lbs

MODEL#	COLOR
PLCBG6C	CEDAR
PLCBG6GY	GRAY
PLCBG6G	GREEN
PLCBG6W	WHITE
PLCBG6B	BLACK

### 8' RESIN BENCH

SIZE: 96" L x 21.5" W x 31.2" H  
WEIGHT: 210 lbs

MODEL#	COLOR
PLCBG8C	CEDAR
PLCBG8GY	GRAY
PLCBG8G	GREEN
PLCBG8W	WHITE



PLGB6C shown

## GARDEN BENCH WITH METAL FRAME

### 4' RESIN BENCH

SIZE: 47.3" L x 25.3" W x 28.86" H  
WEIGHT: 145 lbs

MODEL#	COLOR
PLGB4C	CEDAR
PLGB4BR	BROWN
PLGB4GY	GRAY
PLGB4G	GREEN
PLGB4R	WEATHERED REDWOOD

### 6' RESIN BENCH

SIZE: 71.3" L x 25.3" W x 28.9" H  
WEIGHT: 194 lbs

MODEL#	COLOR
PLGB6C	CEDAR
PLGB6BR	BROWN
PLGB6GY	GRAY
PLGB6G	GREEN
PLGB6R	WEATHERED REDWOOD

### 8' RESIN BENCH

SIZE: 95.3" L x 25.3" W x 28.9" H  
WEIGHT: 243 lbs

MODEL#	COLOR
PLGB8C	CEDAR
PLGB8BR	BROWN



PLHB6C shown

## PARK BENCH WITH METAL FRAME

### 4' RESIN BENCH

SIZE: 48.3" L x 24.9" W x 29.9" H  
WEIGHT: 125 lbs

MODEL#	BENCH COLOR	FRAME COLOR
PLHB4C	CEDAR	BLACK
PLHB4CGF	CEDAR	GREEN
PLHB4GY	GRAY	BLACK

### 5' RESIN BENCH

SIZE: 60.3" L x 24.9" W x 29.9" H  
WEIGHT: 145 lbs

MODEL#	BENCH COLOR	FRAME COLOR
PLHB5C	CEDAR	BLACK
PLHB5CGF	CEDAR	GREEN

### 6' RESIN BENCH

SIZE: 72.3" L x 24.9" W x 29.9" H  
WEIGHT: 175 lbs

MODEL#	BENCH COLOR	FRAME COLOR
PLHB6C	CEDAR	BLACK
PLHB6CGF	CEDAR	GREEN
PLHB6GY	GRAY	BLACK
PLHB6GYG	GRAY	GREEN
PLHB6B	BLACK	BLACK



PLHBB6C shown

## BACKLESS BENCH WITH METAL FRAME

### 4' RESIN BENCH

SIZE: 48.3" L x 21.4" W x 17.0" H  
WEIGHT: 100 lbs

MODEL#	BENCH COLOR	FRAME COLOR
PLHBB4C	CEDAR	BLACK
PLHBB4CGF	CEDAR	GREEN
PLHBB4GGF	GREEN	GREEN
PLHBB4G	GREEN	BLACK
PLHBB4B	BLACK	BLACK

### 6' RESIN BENCH

SIZE: 72.3" L x 21.4" W x 17.0" H  
WEIGHT: 120 lbs

MODEL#	BENCH COLOR	FRAME COLOR
PLHBB6C	CEDAR	BLACK
PLHBB6GGF	GREEN	GREEN
PLHBB6G	GREEN	BLACK

### 8' RESIN BENCH

SIZE: 96.3" L x 21.4" W x 17.0" H  
WEIGHT: 145 lbs

MODEL#	BENCH COLOR	FRAME COLOR
PLHBB8C	CEDAR	BLACK

\* Products are subject to change without notice;  
Dimensions, colors, and weight may vary from the actual product.

## RESIN LUMBER TABLES



PLPT6BKC shown



### KEY FEATURES INNOVATIVE DESIGN

- Maintenance-free: will not rot, corrode, decay or splinter
- UV inhibitors prevent color fading and never needs to be sealed, stained, or painted
- Resistant to moisture and scratching in any weather condition



### DURABILITY

- Heavily braced to prevent sagging
- Powder-coated structural metal frames are rust resistant (not included on resin frame benches)

### ADDITIONAL FEATURES

- Easy to assemble
- Maximum comfort seating



PLPT6BKC shown

### PICNIC TABLE WITH RESIN FRAME 6' RESIN TABLE

SIZE: 58" W x 72" L x 32.5" H  
WEIGHT: 289 lbs

MODEL#	TABLE COLOR	FRAME COLOR
PLPT6BKC	CEDAR	BLACK
PLPT6BRC	CEDAR	BROWN
PLPT6CBR	BROWN	CEDAR
PLPT6BK	BLACK	BLACK
PLPT6BKGR	GREEN	BLACK
PLPT6GRC	CEDAR	GREEN
PLPT6BR	BROWN	BROWN

#### 6' RESIN TABLE CONTINUED

MODEL#	TABLE COLOR	FRAME COLOR
PLPT6CBK	BLACK	CEDAR
PLPT6BKG	GRAY	BLACK
PLPT6GRGY	GRAY	GREEN
PLPT6CC	CEDAR	CEDAR
PLPT6BKBR	BROWN	BLACK
PLPT6GRBR	BROWN	GREEN

### 8' RESIN TABLE

SIZE: 58" W x 96" L x 32.5" H  
WEIGHT: 349 lbs

MODEL#	TABLE COLOR	FRAME COLOR
PLPT8BKC	CEDAR	BLACK
PLPT8BRC	CEDAR	BROWN
PLPT8CBR	BROWN	CEDAR
PLPT8BK	BLACK	BLACK
PLPT8BKGR	GREEN	BLACK
PLPT8BR	BROWN	BROWN
PLPT8BRBK	BLACK	BROWN



PLPTSQC shown

### SQUARE PICNIC TABLE WITH METAL FRAME 4' RESIN TABLE

SIZE: 80" W x 80" L x 29.25" H  
WEIGHT: 300 lbs

MODEL#	COLOR
PLPTSQC	CEDAR
PLPTSQGY	GRAY
PLPTSQG	GREEN

\*Products are subject to change without notice; Dimensions, colors, and weight may vary from the actual product.




PLPTTC shown

## T-TABLE WITH METAL FRAME

### 4' RESIN TABLE

SIZE: 80" W x 80" L x 30" H  
WEIGHT: 265 lbs

MODEL#	COLOR
PLPTTC	CEDAR 






PLPTTADAC shown  
(Wheelchair accessible)

## T-TABLE ADA WITH METAL FRAME

### 4' RESIN TABLE

SIZE: 62.75" W x 80" L x 30" H  
WEIGHT: 231 lbs

MODEL#	COLOR
PLPTTADAC	CEDAR 
PLPTTADAB	BLACK 
PLPTTADAGY	GRAY 



PLPTHEX6C shown

## HEXAGON TABLE WITH RESIN FRAME

### 4' RESIN TABLE

SIZE: 84" W x 84" L x 32" H  
WEIGHT: 250 lbs

MODEL#	COLOR
PLPTHEX6C	CEDAR 
PLPTHEX6G	GREEN 




PLPTHEX6C shown  
(Wheelchair accessible)

## HEXAGON TABLE ADA WITH RESIN FRAME

### 4' RESIN TABLE

SIZE: 68" W x 84" L x 32" H  
WEIGHT: 206 lbs

MODEL#	COLOR
PLPTHEXADA6C	CEDAR 
PLPTHEXADA6G	GREEN 



## RESIN LUMBER ADIRONDACK CHAIRS AND SIDE TABLES



PLAC3240GC shown

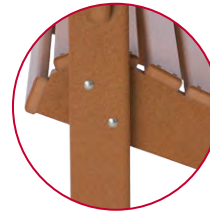


PLST22GC shown



### KEY FEATURES INNOVATIVE DESIGN

- Maintenance-free: will not rot, corrode, decay or splinter
- UV inhibitors prevent color fading and never needs to be sealed, stained, or painted
- Resistant to moisture and scratching in any weather condition



### DURABILITY





- Heavily braced to prevent sagging

### ADDITIONAL FEATURES

- Easy to assemble
- Maximum comfort seating

### RESIN CHAIR





SIZE: 32" W x 32" L x 40" H  
SEAT: 21" W x 20" D x 15" H  
WEIGHT: 45 lbs

MODEL#	COLOR
PLAC3240GC	CEDAR 
PLAC3240BL	BLUE 
PLAC3240G	GREEN 
PLAC3240W	WHITE 



### RESIN SIDE TABLE

SIZE: 22" Round x 20" H  
WEIGHT: 19 lbs

MODEL#	COLOR
PLST22GC	CEDAR 
PLST22BL	BLUE 
PLST22G	GREEN 
PLST22W	WHITE 



\*Products are subject to change without notice; Dimensions, colors, and weight may vary from the actual product.

## 6 FT. FOLDING PICNIC TABLE



### KEY FEATURES INNOVATIVE DESIGN

- Allows the bench seats to move up and create a larger table surface when desired
- Expanded table setting provides an additional 18 inches of space on top

### DURABILITY

- Durable blow molded resin design provides a classic style is easy to maintain
- Powder coated frame resists rust

### EASY STORAGE

- Entire unit can fold down for storage



### ADDITIONAL FEATURES

- Comfortably sits six people
- Ships assembled

### MULTIPLE CONFIGURATIONS

Six foot folding picnic table converts into multiple configurations to solve many entertaining needs. Table also folds to 4-1/2 inches flat for convenient storage.



One seat up

MODEL#	COLOR
BMPT7231	PLATINUM 



Two seats up

### PRODUCT DETAILS

Overall Dimensions	4' 8" W x 6' L x 2' 5-1/4" H
Dimensions Folded	4' 6" W x 6' L x 4-1/2" H
Table Top Dimensions	2' 7" W x 6' L
Seat Dimensions	5' 8-1/2" L x 1' 7-3/4" H
Overall Weight	100 lbs
Table Weight Capacity	200 lbs
Seat Weight Capacity	600 lbs (evenly distributed)

\*Products are subject to change without notice; Dimensions, colors, and weight may vary from the actual product.

## RESIN FURNITURE WITH INTEGRATED STORAGE

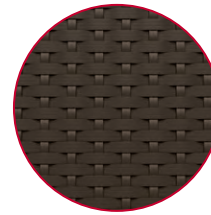


BMCCCPD1800 model shown



### Outdoor Furniture Collection

The Suncast Outdoor Furniture Collection comprises a versatile selection of furniture and accessories designed to create distinctive and cohesive environments that reflect your unique character and style. Combining convenient storage and classic designs, each piece presents a wealth of inventive potential.



### KEY FEATURES DECORATIVE WICKER PATTERN

- Enhances any decor



### CONVENIENT BUILT-IN STORAGE

- Stores outdoor accessories



### CLUB CHAIR

SIZE: 26" W x 29.75" L x 35.5" H  
WEIGHT: 35 lbs  
STORAGE CAPACITY: 11 gal

MODEL#	COLOR
BMCCCPD1800	JAVA <input checked="" type="radio"/>
BMCCCPD1800W	WHITE <input type="radio"/>



### LOVE SEAT

SIZE: 47" W x 29.75" L x 35.5" H  
WEIGHT: 43 lbs  
STORAGE CAPACITY: 23 gal

MODEL#	COLOR
BMWBBCPD5000	JAVA <input checked="" type="radio"/>
BMWBBCPD5000W	WHITE <input type="radio"/>



### DINING CHAIR

SIZE: 25" W x 24.75" L x 36" H  
WEIGHT: 24 lbs  
STORAGE CAPACITY: 6 gal

MODEL#	COLOR
BMDCCPD1400	JAVA <input checked="" type="radio"/>
BMDCCPD1400W	WHITE <input type="radio"/>



### COFFEE TABLE

SIZE: 34" W x 20" L x 18" H  
WEIGHT: 29.6 lbs  
STORAGE CAPACITY: 30 gal

MODEL#	COLOR
BMDBBCPD3010	JAVA <input checked="" type="radio"/>
BMDBBCPD3010W	WHITE <input type="radio"/>



### END TABLE

SIZE: 18.75" W x 18.75" L x 18" H  
WEIGHT: 16.34 lbs  
STORAGE CAPACITY: 13 gal

MODEL#	COLOR
BMDBBCPD1310	JAVA <input checked="" type="radio"/>
BMDBBCPD1310W	WHITE <input type="radio"/>

Products are subject to change without notice; Dimensions, colors, and weight may vary from the actual product.



## SWIMMING POOL HOSE REEL



SIZE: 28.39" W x 20.35" D x 32.64" H  
WEIGHT: 16.1 lbs

MODEL#	COLOR
CPDSFB220W	WHITE 



### KEY FEATURES HOSE STORAGE

- Holds up to 40 ft of 1 ½" pool vacuum hose
- Holds up to 100 ft of backwash hose



### TRANSPORT

- Convenient resin wheels for easy mobility



### EASY WINDING

- Handle crank for easy winding
- Hose clips to hold end of vacuum hose for winding

### ADDITIONAL FEATURES

- Fold down handle for storage
- No assembly required

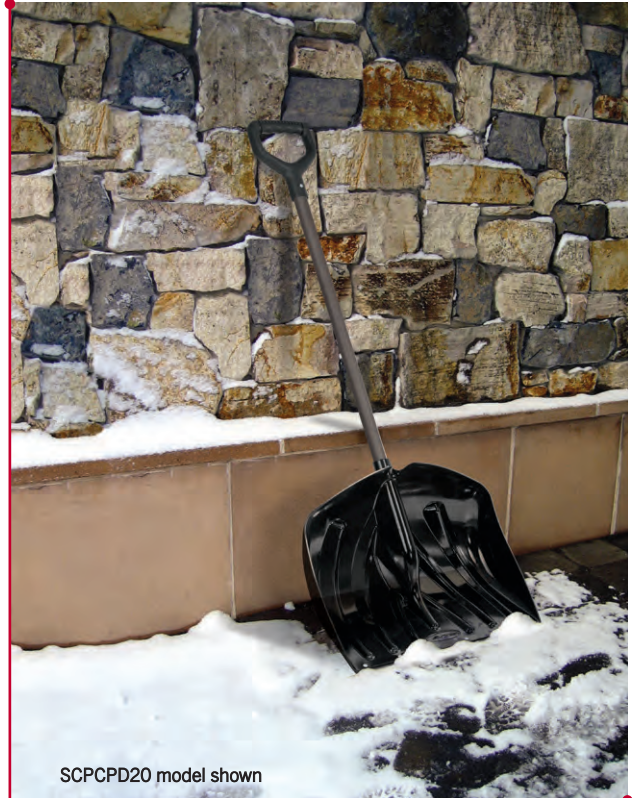


\*Products are subject to change without notice; Dimensions, colors, and weight may vary from the actual product.

## MULTI-PURPOSE SNOW TOOLS



SPECPD24 model shown



SCPCPD20 model shown

### 24" SNOW PUSHER

SIZE: BLADE: 24" W x 12" H  
LENGTH: 60"  
WEIGHT PER CONTAINER: 50.75 lbs  
UNITS PER CONTAINER: 6

MODEL#	COLOR
SPECPD24	BLACK ●

- Angled rib pattern
- Ergonomic dual-grip handle
- Steel Core® shaft with no-slip grip
- Galvanized steel wear strip
- Polycarbonate blade is stronger than conventional plastic blades



### 27" SNOW PUSHER

SIZE: BLADE: 27" W x 12" H  
LENGTH: 60"  
WEIGHT PER CONTAINER: 46.75 lbs  
UNITS PER CONTAINER: 6

MODEL#	COLOR
SPECPD27	BLACK ●

- Angled rib pattern
- Ergonomic dual-grip handle
- Steel Core® shaft with no-slip grip
- Galvanized steel wear strip
- HDPE blade with large surface area



### 10" SNOW SCRAPER

SIZE: BLADE: 10" W  
LENGTH: 56"  
WEIGHT PER CONTAINER: 42.5 lbs  
UNITS PER CONTAINER: 6

MODEL#	COLOR
SSDCPD10	BLACK ●

- Rubberized D grip
- Steel Core® shaft with no-slip grip
- Tempered galvanized steel blade



### 20" COMBO SNOW PUSHER AND SHOVEL

SIZE: BLADE: 20" W x 16" H  
LENGTH: 51"  
WEIGHT PER CONTAINER: 35.33 lbs  
UNITS PER CONTAINER: 5

MODEL#	COLOR
SCPCPD20	BLACK ●

- Angled rib pattern
- Rubberized D grip handle
- Steel Core® shaft with no-slip grip
- Galvanized steel wear strip
- Polycarbonate blade is stronger than conventional plastic blades



### MULTI-PURPOSE SCOOP

SIZE: BLADE: 14" W x 18" H  
LENGTH: 46"  
WEIGHT PER CONTAINER: 26.66 lbs  
UNITS PER CONTAINER: 5

MODEL#	COLOR
SGPCPD16	BLACK ●

- Angled rib pattern
- Rubberized D grip handle
- Steel Core® shaft with no-slip grip
- Polycarbonate blade is stronger than conventional plastic blades



Products are subject to change without notice; Dimensions, colors, and weight may vary from the actual product.