

# CAPABILITIES



Manufacturing | R & D | Private Labeling | Service | Support | Graphic Design

As a progressive manufacturer and private labeler of high quality specialty chemicals and wet wipes,

**Athea Laboratories**

strives to provide creative and profitable solutions to meet constantly changing market conditions and customer needs.

## MANUFACTURING

---

Athea Laboratories has one of the most progressive and flexible manufacturing operations in the industry. Production lines, material flow, and skilled workers all respond quickly to constantly-changing market conditions and production schedules. The ability to produce and blend liquids, aerosols, bacteria, and wet wipes, from existing or custom formulations, makes Athea the ideal manufacturer partner.



## CUSTOMER SERVICE

---

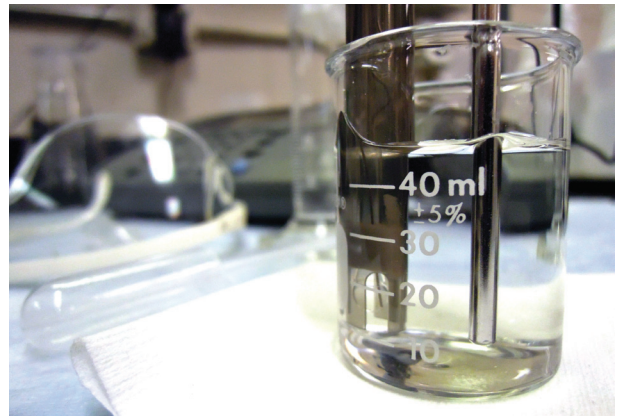
Athea's reputation for outstanding customer service has given us reason to be justly proud. What separates Athea from the rest is our "spirit of service", which shines through even in the way our phones are answered: "It's a great day at Athea..."

Whether it's connecting you directly to an in-house chemist for expert technical support, processing orders the same or next day, or quickly resolving a shipping inquiry, time and competition will never change the dedication we give to our customers.

## GRAPHIC DESIGN

---

Athea's in-house graphics department can design labels from scratch, or incorporate your existing artwork, to strengthen your unique brand. Private-labeled products with quality logos and graphics, literature, and labels strengthen your company's image and separate you from the competition while improving your profit margins. Attractive Total Solutions™-labeled products are also available for those not wishing to private label.



## RESEARCH and DEVELOPMENT

---

Our chemical laboratory is staffed by professional chemists who have formulated over 400 products. With over 50 years of combined experience, our chemists utilize state-of-the-art equipment and procedures to develop and refine top-quality products, including custom formulations, that deliver the highest performance.

## TRANSPORTATION

---

Athea's shipping programs are renowned for dependability - orders are handled accurately and efficiently, and are delivered on time. And over the past few years, we've reduced shipping costs by over 35%, a savings passed directly to our customers.

## SALES and MARKETING

---

With a primarily private-label business, a distribution-only go-to-market strategy, and marketing resources including product brochures, a resource-rich website, and product demonstration videos, we want to help you grow. Whether you're a large company, or a small one with large potential, our entire product line is yours to profit from.

Since 1960, **Athea Laboratories** has produced the highest quality and most effective specialty chemicals and wet wipes, across over twenty categories, for hundreds of customer applications.

## PRODUCT LINES

---

### **WET WIPES**

Athea manufactures over 20 innovative and high-performance wipes for cleaning, polishing, and disinfecting surfaces and hands, including Facility Wipes for cleaning fitness equipment, Hand Sanitizing Wipes for cleaning and sanitizing hands, and Multi-Purpose Towels for cleaning almost anything. Plus single and flat packs ideal for the retail market.

### **GROUNDS MAINTENANCE**

Athea manufactures of the industry's most comprehensive selections of herbicides for nearly any application. Choose from selective herbicides, total kill herbicides, and total kill herbicides with residual for year-long control, available in bulk liquids and aerosols. All backed by the expertise to help you choose the right product for the job.

### **INDUSTRIAL CLEANERS and DEGREASERS**

Athea manufactures the toughest cleaners and degreasers for the most demanding jobs in municipal, manufacturing, industrial and institutional applications. From butyls and safe-acids to d-Limonene and high-pH peroxides, in liquids, powders and aerosols, Athea's Industrial Cleaners and Degreasers work when you need it most.

### **D-LIMONENE and PURE EZ SOY CLEANERS and DEGREASERS**

In the 1980s, Athea was the innovator of d-Limonene-based products, and we remain the leader in the citrus category today. Our PURE EZ soy line brings the addition of lower VOCs and cost to many popular d-Limonene products, as well as increased performance in certain products, and our new Solvonene line further reduces VOCs and costs while maintaining performance. Known for their versatility and environmental impact, our citrus and soy products offer the broadest range of cleaners, degreasers and specialty products available.

### **INSECTICIDES**

Athea manufactures one of the Industry's most comprehensive lines of Insecticides. Liquids, powders, foggers and aerosols are available to control most any type of crawling and flying insects. Specialized products control bed bugs and fire ants, and are available for food service applications.

### **DISINFECTANTS and SANITIZERS**

The growing threat of harmful and even deadly bacteria makes effective Disinfectants and Sanitizers more critical than ever. From wet wipes to liquids, for hospitals to food prep areas, and to protect against MRSA to Hepatitis, Athea produces a complete line and the expertise to select the correct product for each application.

## PRODUCT LINES

---

### **BACTERIAL-ENZYME DIGESTANTS**

Not all bacteria are created equal. Athea Laboratories uses the highest-quality bacteria available, from five different strains, all cultured for a specific purpose. Our freeze-dried bacteria are in spore form, rather than vegetative adult form, for greater stability and longer life. And, our bacteria replicate every 20 minutes and consume organic waste thousands of times faster than naturally-occurring bacteria, for unmatched performance. The result is broader application and better results.

### **WASTE WATER and SEWAGE TREATMENT**

Wastewater and sewage treatment facilities can be some of the most demanding environments. Very simply, the products must work. Athea's selection of dyes, sweeteners, degreasers, drain openers, and bacterial-enzymes keep sewers and lift stations operating at peak performance.

### **WINTER PRODUCTS**

Athea's Winter Products line features essential and innovative products to keep roads and common areas safe. Granular ice melt blends and next-generation liquid ice melts, snow plow coatings to keep blades clear of ice and snow, plus salt rinse and windshield de-icer, are all available with no minimum order size.

### **AEROSOLS**

With over 40 different aerosol products to choose from, the ability to customize an aerosol formulation for specific needs, and industry-low private label minimums, Athea leads the market in aerosol capabilities.

### **FLOOR CARE**

Athea's Floor Care line is a comprehensive collection of finishes, sealers and maintainers to keep floors lasting and looking new. From 16% - 22% solids finishes to neutral cleaners, baseboard strippers and dustmop treatments, to peroxide cleaners and carpet wipes, all products are designed to perform at the industrial level that you demand.

### **SPECIALTY PRODUCTS**

Athea's Specialty Products program is where you'll find the industry's most innovative products that can't be found anywhere else, along with essentials for many unique industries. You'll find true rust converters, a sacrificial graffiti protection barrier, and safe-acid cleaners, as well as Fire Fighting Products and specialized solvents.

